

*Because every life has a purpose...*



# PID Sensor Maintenance

# PID Sensor Maintenance

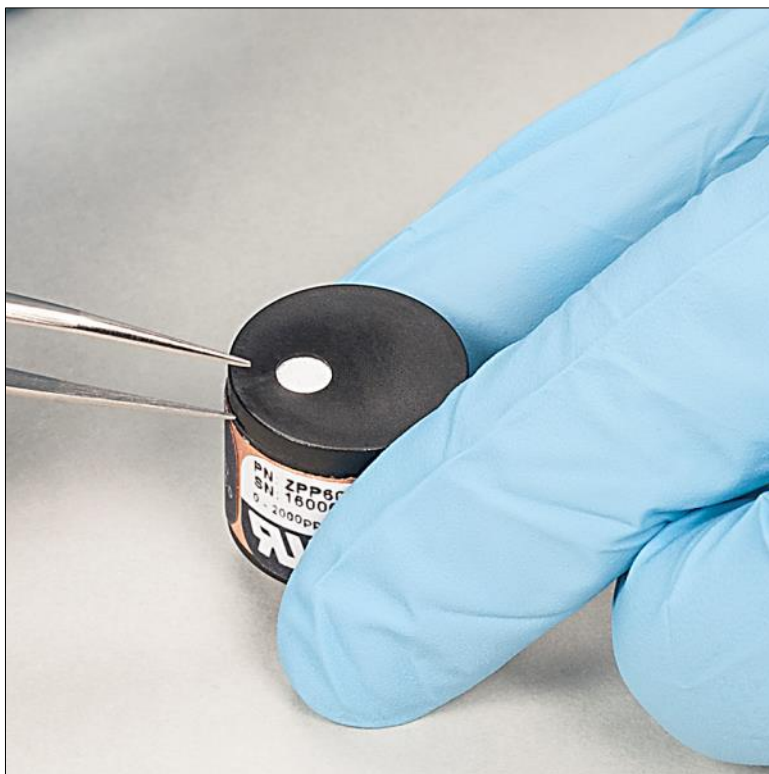
- The new ALTAIR 5XPID uses a Baseline 20mm PID sensor.



- Sensor must be serviced as sensitivity is lost
- Frequency depends on use and atmosphere the instrument is exposed to

# PID Sensor Maintenance

- Using tweezers, remove sensor cap by prying off at notch next to filter inlet



- Remove filters and set aside. Glossy Teflon is on top, cotton on bottom.



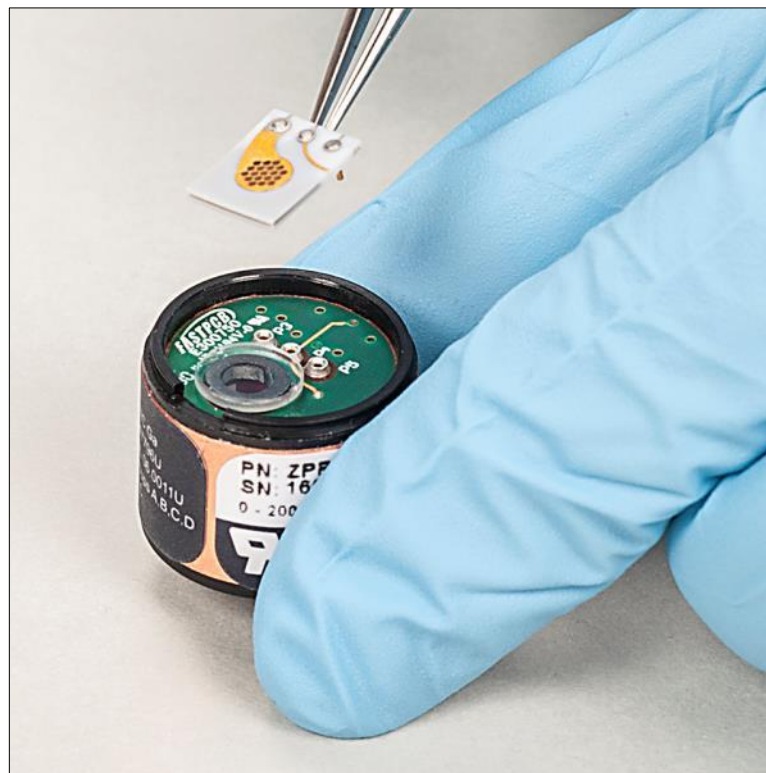


# PID Sensor Maintenance

- Remove the spacer and set aside



- Carefully remove cell assembly by prying under the edge near the three connector pins



# PID Sensor Maintenance

- Carefully remove the sensor lamp. Do not scratch the lamp lens or chip the edges.



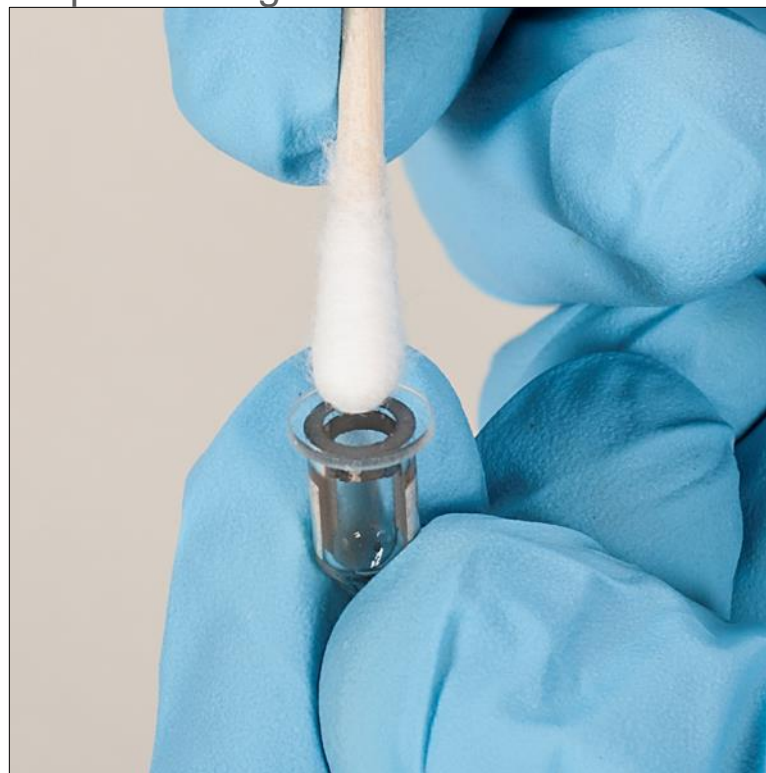
- Use tweezers, gently pry edges of lamp up utilizing the notch in the housing as a guide
- Once freed, lift lamp out and set aside
- Do not touch lens area
- Gloves are recommended

# PID Sensor Maintenance

- Using the PID cleaning kit 10165248, soak a clean swab with methanol



- Rub in circular motion for 60 seconds then repeat with dry swab, Allow to dry for 30 minutes before proceeding



# PID Sensor Maintenance

- Allow lamp to dry for 30 minutes, then place back in sensor. Be sure to align metal bulb pads with springs inside cavity.



- Apply light pressure with swab to seat fully in housing.





# PID Sensor Maintenance

- Carefully install cell assembly by aligning pins to sockets – Should be flush with lamp



- Replace the spacer surrounding the cell assembly





# PID Sensor Maintenance

- Place filters over cell assembly, cotton on bottom and Teflon on top, shiny side up



- Align cap key with notch on housing and press down firmly to snap onto housing

