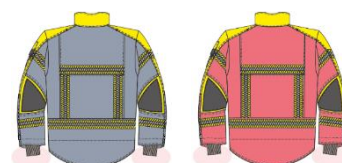


Coat Model No.: **X4RW/ 37113M** (Navy blue/yellow); **X4RW/ 37113O** (Red/yellow)

Hybrid, easily convertible Technical Rescue and Wildland solution where removable moisture barrier makes the suit either technical rescue or wildland compliant only (when moisture layer zipped out). Fitted design provides freedom of movements and reflects changing duties of technical rescue crews and wildland firefighting. Female design available to fit all genders. One convertible garment optimises budget while serving two applications.

Coat description	
Design description	<ul style="list-style-type: none"> • Multipurpose, convertible Technical Rescue and Wildland solution – moisture barrier to be zipped in or out making the suit either technical rescue or wildland only compliant • Pleat in the shoulder - allows for a broad range of motion • Ergonomic curved sleeve with reinforced elbow panels. • Underarm gussets. • Enhanced Elbow Padding • Wrist Adjusters • Note: cuffing is attached to the detachable lining, not the outer garment • Notch at the hemline on both sides of the body • Female Pattern: enhanced fit for the female
Pockets and Features	<ul style="list-style-type: none"> • Outer pockets: 2 x unique half bellow pockets, 1 x unique bellow pocket with flap and reinforcement pull tab, with pen pocket (Pen and Notebook pocket on the sleeve) • Inner pockets: 1 x Patch pocket on lining on the right • 1 x Vertical pocket with zip under catch • 2 x Unique Radio pockets with adjustable cradles and radio hook – Accommodates multiple radio models and sizes. Hook to prevent radio from falling out while moving. Integrated flashlight holder. • Antistatic Grab-Tabs on all pockets • Lightweight plastic accessory hooks
Trim	<ul style="list-style-type: none"> • The 3M® 50mm heat sealed segmented triple trim reflective (Yellow/Silver/Yellow). • EN 16689 and HuPF versions available
Accessories	<ul style="list-style-type: none"> • Moisture barrier to be zipped in or out

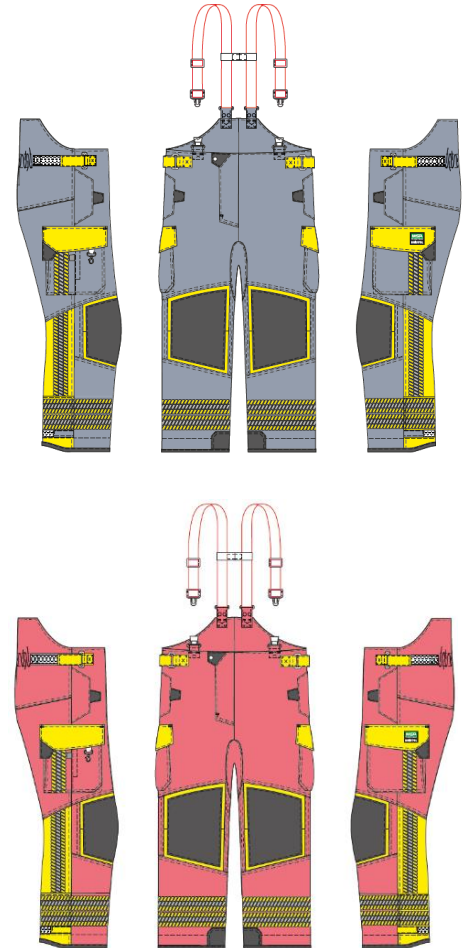


Technical information	
Standard/ Certifications/ Approvals	EN 1149-5:2018 (anti-static) EN ISO 15384:2020 (wildland) EN 16689:2017 (technical rescue)
Care Info/ Icons	
Fabrics (Outer shell/ Moisture)	Lenzing™ FR and Aramid blend/ Gore-Tex® CrossTech® Flameliner® 170 (UT4/ M12)
Reflective	3M® 50 mm Heatseal segmented triple trim reflective Segmented, very breathable trim that does not restrict mobility. Tested for durability to 50 washes.
Weight	250g/m2 + 170g/m2 = 420g/m2
Available Colours	Navy/ Yellow and Red/Yellow Minimum order quantities may apply
Available Sizes	Available in 40 sizes both in male and female style – same measurement charts as X4
Washing Label	Provides easy, integrated tracking of garment launderings

Trousers Model No. TX4RW/ 37113N (Navy blue/yellow) ; TX4RW/ 37113P (red/yellow)

Multipurpose convertible trousers with detachable moisture barrier making them either technical rescue or wildland only compliant. Lightweight and comfortable garment for these outdoor interventions, which do not require EN469 standard. Fitted design increases comfort and high back helps protect firefighter's back in typical rescue situations. Female design to optimise the fit for all genders. One convertible garment optimises budget while serving two applications.

Trousers description	
Design description	<ul style="list-style-type: none"> • Detachable moisture barrier makes the suit either technical rescue or wildland only compliant • High back trouser • Detachable Suspenders • Hook & Loop waist adjusters • Enhanced, slimmer fit through the thigh • Enhanced knee Pads • Reinforced boot cut to reduce wear and tear on the back bottom of the legs and inner ankle area
Pockets and Features	<ul style="list-style-type: none"> • Outer pockets: 2 x pleated back bellow pockets, Knife pocket on top of right pocket with side entry, 2 x vertical inset pockets in side seams - Easy access storage for tools and accessories • Hip patch pocket on lining
Trim	<ul style="list-style-type: none"> • 50mm heat sealed segmented triple trim reflective (Yellow/Silver/Yellow). • EN 16689 and HuPF versions available
Accessories	<ul style="list-style-type: none"> • Moisture barrier is detachable via studs



Technical information	
Standard/ Certifications/ Approvals	EN 1149-5:2018 (anti-static) EN ISO 15384:2020 (wildland) EN 16689:2017 (technical rescue)
Care Info/ Icons	
Fabrics (Outer shell/ Moisture)	Lenzing™ FR and Aramid blend/ Gore-Tex® CrossTech® Flameliner® 170 (UT4/ M12)
Reflective	3M® 50 mm Heatseal segmented triple trim reflective Segmented, very breathable trim that does not restrict mobility. Tested for durability to 50 washes.
Weight	250g/m2 + 170g/m2 = 420g/m2
Available Colours	Navy/ Yellow and Red/Yellow Minimum order quantities may apply
Available Sizes	Available in 40 sizes both in male and female style – same measurement charts as X4
Washing Label	Provides easy, integrated tracking of garment launderings